

GigaFin FlowLine 500 / 500-F

Applications

- Improve network efficiency
- Prioritize important applications
- Protect from malicious attacks
- Internal infrastructure security

Key Features

- Simple deployment in transparent mode
- Network traffic analysis and control
- Peer-to-peer and undesirable usage management
- High speed 2Gbps performance
- Denial-of-service prevention
- Hardware bypass



In-line Security and Traffic Management

The **GigaFin FlowLine 500** is a high performance appliance providing increased visibility into network flows with the capability of immediate remediation and traffic management. The in-line transparent mode of deployment, low power consumption and Gigabit throughput make it easy to deploy within network infrastructure to complement existing network equipment.

Peer-to-peer application detection and **NetFlow monitoring** provide administrators with effective tools to identify bandwidth abuse and policy violations. **Access control** and **traffic management policies** give the ability to enforce security and improve network performance. **Denial-of-Service prevention** allows greater resilience to services and protects from large scale attacks.

The **GigaFin FlowLine** comes with integrated hardware by-pass for improved network up-time even in cases of power and hardware failure, an essential feature of in-line monitoring devices.

Diagram 1 shows how **FlowLine** appliances can be deployed to monitor network traffic.

Several **FlowLine** appliances collect and report NetFlow network traffic data to a Flow collection server to analyze data. Additionally, each **FlowLine** appliance can also shape network traffic, apply access control policies and defend against Denial-of-Service attacks.

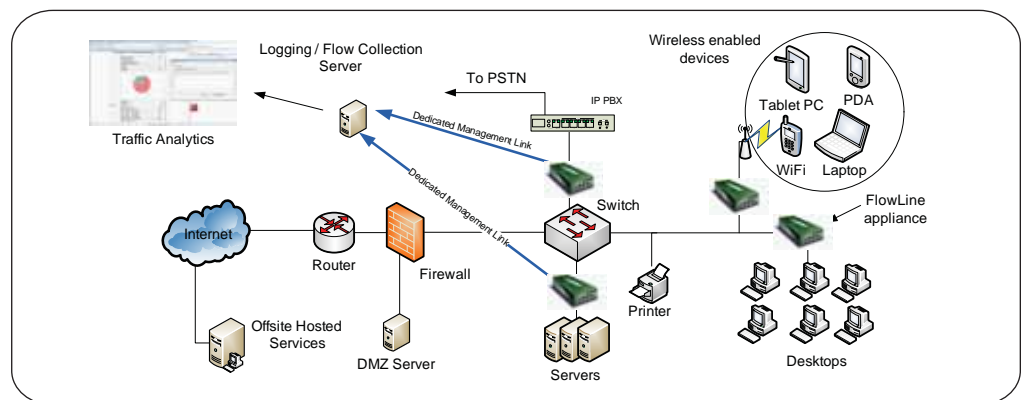


Diagram 1: Traffic monitoring and attack defense with FlowLine appliances

Diagram 2 shows a typical LAN or WAN environment where the infrastructure is segmented across Gigabit links.

There is extensive use of off-site hosted services and reliable access to these services is crucial. With **FlowLine** appliances deployed across the distributed network, an organization can optimize network usage to give higher priority to more important traffic.

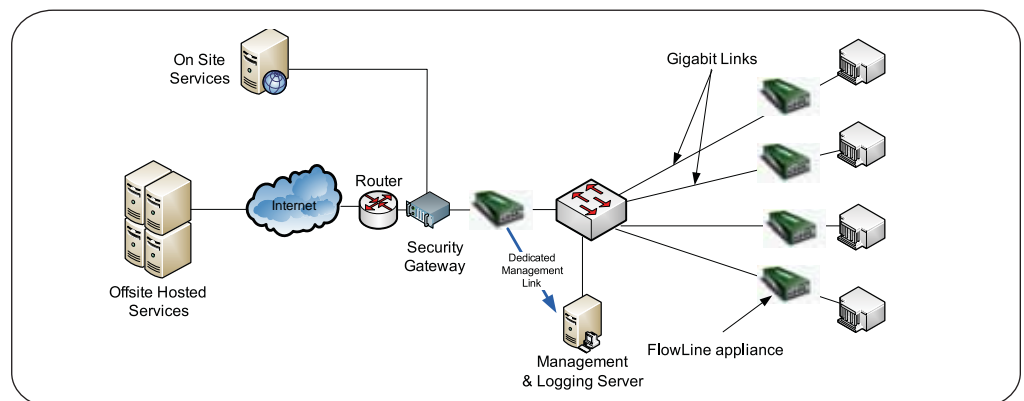


Diagram 2: Bandwidth management and network analysis in a distributed environment

GigaFin FlowLine 500 / 500-F

MAXIMUM PERFORMANCE AND CAPACITY

THROUGHPUT	2Gbps
CONCURRENT FLOWS	192,000
SESSION CREATION RATE	16,000/sec

PORT CONFIGURATION

CONSOLE PORT	RJ45
INTERFACES (500)	3 x (10/100/1000)
INTERFACES (500-F)	2 x SFP and 1 x SFP/RJ45
SFPs FOR 500-F	Not Included; List of tested SFPs at http://www.gigafin.com/products/flowline500

MODE OF OPERATION

NETWORK MODES	Transparent, Passive Monitoring, Route, NAT
HARDWARE BYPASS (500)	2 Interfaces, Power/Software Failure or Manual
HARDWARE BYPASS (500-F)	2 Interfaces, Software Failure or Manual

BANDWIDTH CONTROL

TRAFFIC MONITORING, ALERTING & SHAPING	Aggregate bandwidth, Per flow bandwidth and connection rate
DEEP PACKET INSPECTION (DPI)	Peer-to-Peer detection (Including BitTorrent, eMule, Winny)
CUSTOM DPI SIGNATURES	Yes
TRAFFIC MONITOR	NetFlow v5, Top Talkers

POLICIES

ACCESS CONTROL POLICIES	500
-------------------------	-----

ATTACK DETECTION & MITIGATION

DoS/DDoS	Yes
TCP REASSEMBLY FOR FRAGMENTED PACKETS	Yes
MALFORMED PACKET	Yes
STATEFUL PROTOCOL SIGNATURE	Yes
RECONNAISSANCE DETERRENCE	Yes
UDP, SYN and ICMP FLOOD DETECTION	Yes

NETWORKING

MULTICAST TRAFFIC PASS THROUGH	Yes
POLICY BASED TRAFFIC PRIORITIES	Yes
QoS (DSCP AND TRAFFIC PRIORITIZATION)	Yes

SYSTEM MANAGEMENT, LOGGING, MONITORING

SYSLOG	Up to 2 servers
SNMP	v2
MANAGEMENT	HTTP, HTTPS, Telnet, SSH, Console

PHYSICAL SPECIFICATIONS

DIMENSION (W X L X H)	5" x 10" x 1.5" in
WEIGHT (LB)	2
MAXIMUM POWER CONSUMPTION	15 Watts

ENVIRONMENTAL SPECIFICATIONS

OPERATING TEMPERATURE	0°C – 45°C
STORAGE TEMPERATURE	-25°C – 70°C
OPERATING / STORAGE HUMIDITY	5% to 90% non-condensing

CERTIFICATION/COMPLIANCE

ROHS	Yes
SAFETY	UL60950-I, EN60950, TUV
EMC	5% to 90% non-condensing, VCCI Class A, C-Tick



The GigaFin FlowLine is the ideal solution for:

- Internet Service Providers
- Datacenters
- Academic Institutions
- Government Agencies
- High Performance Computing

SKU	Description
GF-2120	GigaFin FlowLine 500
GF-2122	GigaFin FlowLine 500-F
GF-3004	FlowLine 1 year 8x5 support
GF-3005	FlowLine 2 year 8x5 support
GF-3006	FlowLine 3 year 8x5 support

CORPORATE HEADQUARTERS

1905 Pruneridge Ave, Ste 200
Cupertino, California 95014
(toll-free) 1.866.611.8747
(tel) +1.408.200.5700
(fax) +1.408.200.5799

WEB SITE:

www.gigafin.com

E-MAIL:

info@gigafin.com