



Network Analysis & Remediation

Visualize Traffic, Control Bandwidth Abusers

Applications

- Identify and control bandwidth abuse
- Improve performance for critical real-time applications
- Pinpoint network problems immediately without adding network management complexity
- Discover traffic anomalies in the network

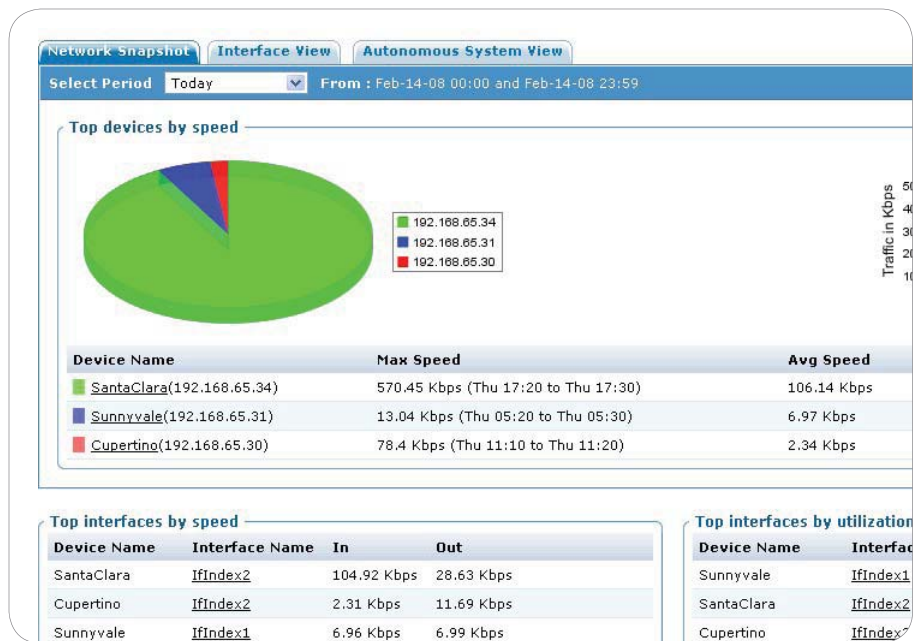
Key Features

- Complete visibility into network activities
- List hosts and applications by top bandwidth usage and/or connections
- Control bandwidth and connection rates based on host/network address, protocol, and/or port information
- Transparent deployment
- High-speed 2Gbps performance
- Hardware bypass (FlowLine appliances only)

GigaFin Networks enables organizations of all sizes to keep their networks running at peak efficiency by providing instant, streamlined insight and control over traffic within the LAN.

Designed to make network traffic visible and manageable for IT administrators, GigaFin's appliances allow users to monitor and control network traffic at Gigabit speeds, prioritizing bandwidth availability, blocking unwanted applications and controlling usage to protect the network and ensure optimal performance of critical applications. GigaFin's affordable, easily-managed appliances enable users to maximize the value of their networks without management complexity, performance degradation or infrastructure changes.

What's more, GigaFin appliance's cost-effective price point means you can deploy them at multiple points and in front of existing network equipment. The bottom line is maximum productive network use.



ApplicationIN [1.12 GB]

Application	Traffic	Traffic Percentage
https	269.99 MB	26%
UDP_App [show Ports]	89.27 MB	8%
HMP_App [show Ports]	24.96 MB	2%
http	10.45 MB	1%
vnc	5.07 MB	<1%
TCP_App [show Ports]	2.1 MB	<1%
m8-m8-dev	2.03 MB	<1%
hosts2-ns	2.02 MB	<1%
ctf	1.91 MB	<1%
dnsix	1.7 MB	<1%
Others	719.36 MB	64%

ApplicationOUT [319.69 MB]

Application	Traffic	Traffic Percentage
vnc	102.46 MB	32%
http	46.97 MB	15%
HMP_App [show Ports]	25.07 MB	8%
https	16.08 MB	5%
hosts2-ns	2.03 MB	1%
m8-m8-dev	1.94 MB	1%
ctf	1.9 MB	1%
dnsix	1.6 MB	1%
mfcobol	1.58 MB	<1%
su-m8tg	1.37 MB	<1%
Others	117.75 MB	37%

SourceIN [1.12 GB]

Source	Traffic	Traffic Percentage
192.168.65.106	292.97 MB	26%
192.168.65.31	88.4 MB	8%
67.135.228.87	2.1 MB	<1%
192.168.65.150	570.59 KB	<1%
64.79.127.70	558.88 KB	<1%
72.247.145.64	469.16 KB	<1%
65.74.167.39	393.01 KB	<1%
91.189.08.31	374.95 KB	<1%
64.143.89.229	289.5 KB	<1%

SourceOUT [319.69 MB]

Source	Traffic	Traffic Percentage
192.168.65.100	100.7 MB	32%
192.168.5.15	26.93 MB	8%
192.168.5.18	8.41 MB	3%
38.97.103.161	0.09 MB	3%
38.97.102.136	5.18 MB	2%
209.85.139.89	1.97 MB	1%
64.79.127.70	1.92 MB	1%
66.150.96.119	1.29 MB	<1%
64.207.126.68	694.03 KB	<1%
69.59.147.35	368.06 KB	<1%

Network Analysis & Remediation

SlimLine 100
GF-2050

FlowLine 500
GF-2120

FlowLine 500-F
GF-2122


	SlimLine 100 GF-2050	FlowLine 500 GF-2120	FlowLine 500-F GF-2122
Maximum Performance & Capacity			
THROUGHPUT		2Gbps (Full Duplex)	
CONCURRENT SESSIONS		192,000	
SESSION CREATION RATE		16,000/sec	
POLICIES		500	
Port Configuration			
INTERFACES	2 x (10/100/1000)	3 x (10/100/1000)	2 x SFP*, 1 x SFP/RJ45
CONSOLE PORT	RJ45	RJ45	RJ45
Mode of Operation			
NETWORK MODES	Passive monitoring, In-line Transparent, Route, NAT		
MANAGEMENT INTERFACE CONFIGURATION	Static IP address		
HARDWARE BYPASS	External unit for Power failure	Bypass on Power or Software failure	Bypass on Software failure, External unit for Power failure
Bandwidth Control			
TRAFFIC MONITORING, ALERTING & LIMITING	Aggregate bandwidth, Per source IP bandwidth, Per flow bandwidth and connection rate (Source IP, Destination IP, Protocol, Destination port), Scheduling Peer-to-Peer detection and Bandwidth limiting*		
DEEP PACKET INSPECTION (DPI)	Peer-to-Peer detection and Bandwidth limiting*		
CUSTOM DPI SIGNATURES	Yes		
TRAFFIC MONITORING PROTOCOL	NetFlow v5, v9		
Networking			
MULTICAST TRAFFIC PASS THROUGH	Yes		
POLICY BASED TRAFFIC PRIORITIES	Yes		
QoS (DSCP AND TRAFFIC PRIORITIZATION)	Yes		
System Management, Logging, Monitoring			
SYSLOG	Up to 2 servers		
SNMP	v2		
MANAGEMENT	GigaFin Management Console, Telnet, SSH, Serial Console		
Physical Specifications			
DIMENSION (W X L X H)	3 x 6 3/4 x 1 3/8 in	5 x 10 x 1.5 in	5 x 10 x 1.5 in
WEIGHT (LB)	1.3	2	2
MAXIMUM POWER CONSUMPTION	15 Watts		
Environmental Specifications			
OPERATING TEMPERATURE	0°C – 45°C		
STORAGE TEMPERATURE	-25°C – 70°C		
OPERATING / STORAGE HUMIDITY	5% to 90% non-condensing		
Certification/Compliance			
MTBF	Greater than 100,000 Hours		
ROHS	Yes		
SAFETY	UL60950-I, EN60950, TUV		
EMC	FCC Class A, EN55022 Class A, VCCI Class A, C-Tick, CN55024, KN22, KN24		

* A complete list of supported SFPs and peer-to-peer applications is available on line at <http://www.gigafin.com/products>