

Gilmer County School System

Challenge

- Increase visibility into the network
- Manage traffic flows to maximize PowerSchool performance
- Minimize slow response times

Solutions

- GigaFin SlimLine 100

Benefits

- Improved view of network traffic flow
- Bandwidth optimized for mission-critical applications and services
- Unwanted or undesirable traffic contained
- Minimal impact to budget
- Easy integration with existing network infrastructure
- Future-proofed solution

K-12 School District Makes the Grade with SlimLine Network Analysis and Traffic Control Solution

BUSINESS CHALLENGE

The network administrator for Gilmer Schools was spending a sizable portion of his day responding to user complaints about slow response times. Specifically, e-mail delivery and a software application at a computer lab at the elementary school were slow. Additionally, administrators wanted the ability to prioritize traffic to the PowerSchool student information system, which teachers and administrators rely heavily upon.

Attempts to troubleshoot these complaints were ineffective. With diagnostic tools limited to bandwidth utilization per link, the network administrator simply didn't have the visibility into the network to identify the specific causes of the slowness and correct them. What he needed was a way to analyze and manage traffic flows—without breaking the budget.

GIGAFIN NETWORKS SOLUTION

After searching the market for a solution, Gilmer Schools found GigaFin Networks. The GigaFin SlimLine 100 is a high-performance appliance providing increased visibil-

ity into network flows with the capability of immediate traffic management.

The SlimLine 100 appliance from GigaFin Networks is the only solution for academic institutions that provides cost-effective traffic management and monitoring at true Gigabit speeds and in the most compact form factor. Institutions can translate their organizational priorities into traffic shaping policies that optimize bandwidth for mission-critical applications and limit unwanted or undesirable traffic on the network that can impact response times. More significantly, with its cost-effective price point and power efficiency of 15 Watts, the SlimLine 100 appliance can be deployed at multiple points within the infrastructure for maximum control of the internal network.

Gilmer School System purchased three GigaFin SlimLine 100 appliances for its network (see Figure 1). Each SlimLine 100 functions as a passive probe connected inline, monitoring all the data that passes through it. This data is sent to the reporting application, which provides a

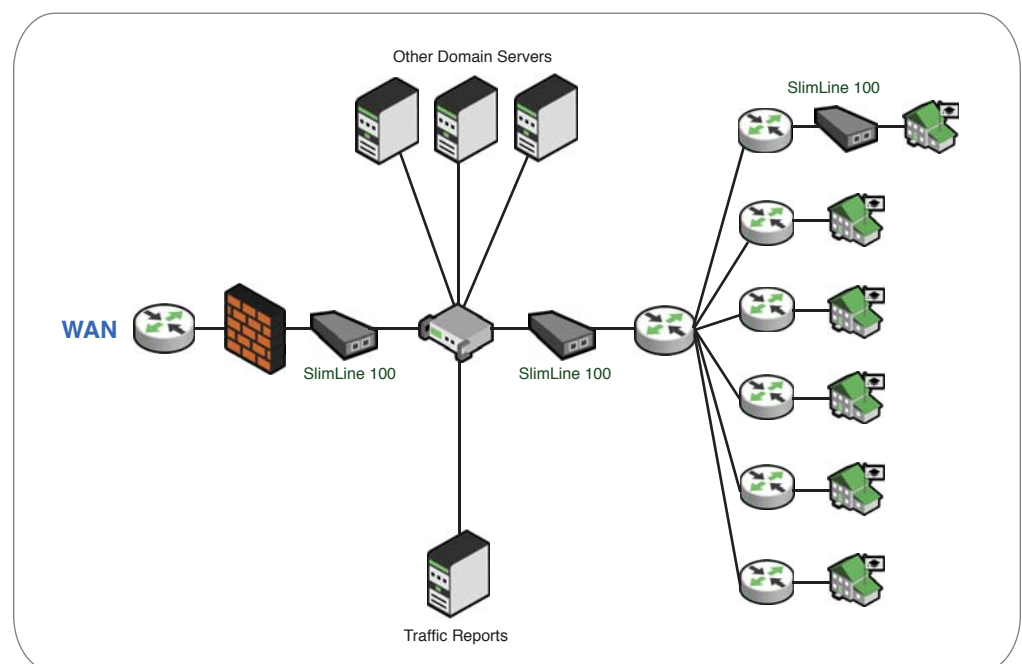


Figure 1: Gilmer County School System Network



CASE STUDY

Gilmer County School System

graphical user interface to view network activity. From general network trends to individual session information for each host, SlimLine 100 provides the network administrator extensive visibility into all traffic traversing the appliance.

Now when the system administrator receives a complaint that email delivery is taking too long, he can use SlimLine 100 to examine flows to and from the e-mail server and determine whether the problem is network or server related. He can also prioritize e-mail traffic over other types of traffic on the network, ensuring that messages are delivered within an acceptable interval.

The SlimLine 100 appliance's small form factor and portability enabled the School System to deploy one of the devices directly in front of the elementary school computer lab to analyze each flow in detail. If warranted, the Network Administrator can create a group of high-priority applications or services that receive a predetermined portion of available bandwidth.

All non-essential applications and services are limited to the remaining bandwidth. If, for example, students are playing bandwidth-intensive video games, or downloading music or movies, SlimLine 100 can limit their impact on the network.

BENEFITS

The GigaFin Networks SlimLine 100 appliances provide a cost-effective and efficient way for the Gilmer School System to monitor its network and ensure the performance of critical applications and services. The non-intrusive, transparent, inline deployment requires no infrastructure change or upgrade.

GigaFin SlimLine 100 supports monitoring network flows at gigabit throughput while maintaining line quality and low latency, providing a future-proof solution that can meet the Gilmer School System's needs for years to come.

ABOUT GIGAFIN NETWORKS

GigaFin Networks enables organizations of all sizes to keep their networks running at peak efficiency by providing instant insight and control over traffic. GigaFin's affordable, high-speed appliances enable users to maximize the value of their networks without performance degradation or infrastructure changes. Headquartered in Cupertino, California, GigaFin was founded in December 2002 and has received funding from leading VC firms Sevin Rosen Funds, Worldview Technology Partners and Incubic Venture Capital. Further information on the company can be found at <http://www.gigafin.com>.

CORPORATE HEADQUARTERS

19050 Pruneridge Ave, Ste 200
Cupertino, California 95014
(toll-free) 1.866.611.8747
(tel) +1.408.200.5700
(fax) +1.408.200.5799

WEB SITE:

<http://www.gigafin.com>

E-MAIL:

info@gigafin.com