

CASE STUDY

Leading University's College of Veterinary Medicine Deploys SlimLine Firewall Appliance for Security of Medical Devices

University of Illinois' College of Veterinary Medicine ranks among the best in the Country. Its state-of-the-art medical facilities include an extensive array of diagnostic equipment for treating animals of all sizes—from cats to horses. Among the X-ray, CAT Scan, and ultrasound devices is a Magnetic Resonance Imaging (MRI) machine, which has served the school for many years. The facility often has the need to transmit digital images generated by this MRI device over the network to veterinary staff at other locations, such as zoos.

BUSINESS CHALLENGE

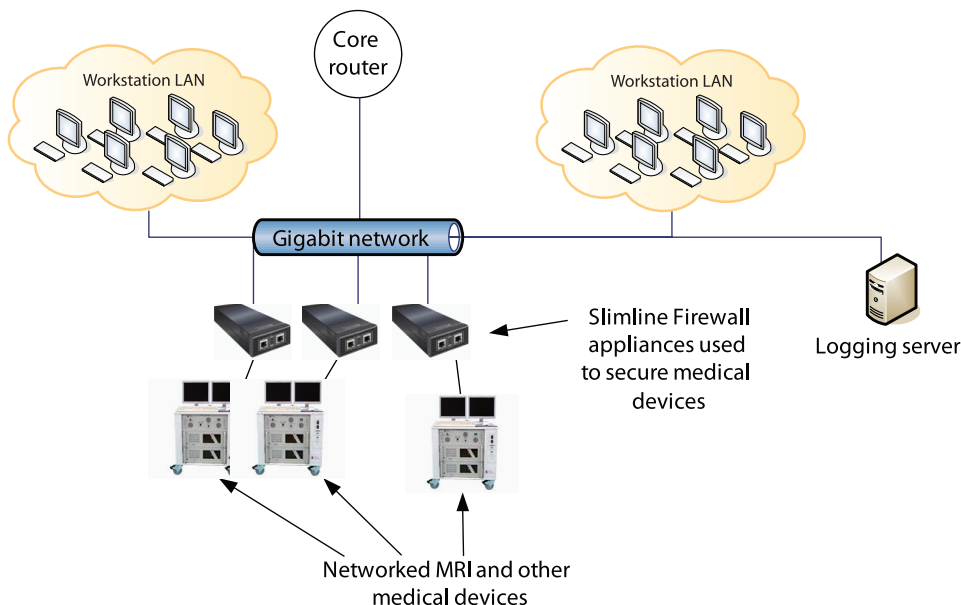
Data generated by the MRI machine is classified as medical information, which must be secured under the Health Insurance Portability and Accountability Act (HIPAA). Failure to protect this information can lead to penalties and fines against the organization. University of Illinois needed to ensure that the device met regulatory compliance.

In addition, equipment such as MRI machines come embedded with a computer, making updating the software a non-trivial task. In this particular case, the operating system vendor had ceased to create patches for the OS in question.

GIGAFIN NETWORKS SOLUTION

The university's IT department began searching for a solution that would secure the MRI machine and help it meet compliance regulations. The solution needed to operate in transparent mode and support one-to-one NAT mode in order to fit into the existing network architecture without requiring changes. The GigaFin Networks SlimLine Firewall was chosen to secure the MRI device. GigaFin provided the university with a sample configuration, which allowed the IT team to configure the device for transparent mode and one-to-one NAT mode using the standard Command Line Interface (CLI) interface.

To ensure compliance and threat mitigation across its network, University of Illinois was using a data management appliance to automatically collect and aggregate log data from network elements. The SlimLine Firewall appliance provided standard Simple Network Management Protocol (SNMP) and CLI capabilities that allowed integration with the data management server.



FEEDBACK

"We needed a high throughput device for passing medical image studies to referring veterinarians in an economical package. The Slimline appliance answers all those needs."

Craig Flowers, Veterinary Medicine Computing Services, University of Illinois

CHALLENGE

- Ensure HIPAA compliance of medical data
- Secure data generated by medical device
- Protect medical device from unauthorized network access

SOLUTION

- GigaFin Networks SlimLine Firewall appliance

Corporate Headquarters

6373 San Ignacio Ave.
San Jose, California 95119
(tel) +1 408.440.3760

E-mail:

info@gigafin.com

Web site:

www.gigafin.com



CASE STUDY

BENEFITS

The GigaFin Networks SlimLine Firewall appliance offers high performance NAT and security features in a compact footprint utilizing only 15Watts of power consumption, saving energy and reducing cooling costs. The combination of a small footprint and low power requirements provide customers with flexible deployment options to increase security of existing network equipment including medical devices.

ABOUT GIGAFIN NETWORKS

Headquartered in Cupertino, California, GigaFin Networks is the leading provider of cost-effective internal security and traffic management solutions that enable complete control over complex, high-performance networks through increased security and visibility into traffic usage within the network infrastructure. GigaFin Networks SlimLine appliances feature firewall, flow monitoring, traffic management, peer-to-peer application management and Denial-of-Service prevention applications.

GigaFin Networks was founded in December 2002 and has received funding from leading VC firms Sevin Rosen Funds, Worldview Technology Partners and Incubic Venture Capital. Further information on the company can be found at www.gigafin.com.

Corporate Headquarters

19050 Pruneridge Ave, Ste 200
Cupertino, California 95014
(toll-free) 1.866.611.8747
(tel) +1.408.200.5700
(fax) +1.408.200.5799

E-mail:

info@gigafin.com

Web site:

www.gigafin.com

©2007 GigaFin, Inc. This document contains information that is proprietary to GigaFin Networks, Inc. No part of this document may be reproduced in any form without prior written approval by GigaFin. GigaFin shall have no liability for errors, omissions or inadequacies regarding the information contained herein or for interpretation thereof. The opinions expressed herein are subject to change without notice.