

CASE STUDY

Meeting Gigabit Speed and Security within Budget Requirements Utilizing a GigaFin-Based Firewall

BUSINESS CHALLENGE

Lawrence Berkeley National Laboratory (Berkeley Lab) needed to balance the performance and security requirements of a newly upgraded Gigabit network with reasonable cost.

Berkeley Lab has been a leader in science and engineering research for more than 70 years and holds the distinction of being the oldest of the U.S. Department of Energy's National Laboratories. The Lab is managed by the University of California, operating with a staff of about nearly 4,000 employees, including more than 500 students. Visit www.lbl.gov for more information.

With 13,000 attached devices and 4,000 users, Berkeley Lab's IT mission is to keep the topology simple, homogenous and open. According to Michael Bennett, senior network engineer, the most significant changes over the past few years have been increasing network complexity and congestion. As topology, switch infrastructure, and policy management become more complicated, maintaining speed and throughput within budget has become more challenging. This has created a balancing act between performance and security. "In general, performance lags to meet security needs due to cost," says Bennett.

"It's a constant battle to let people get their work done and protect the network at the same time."

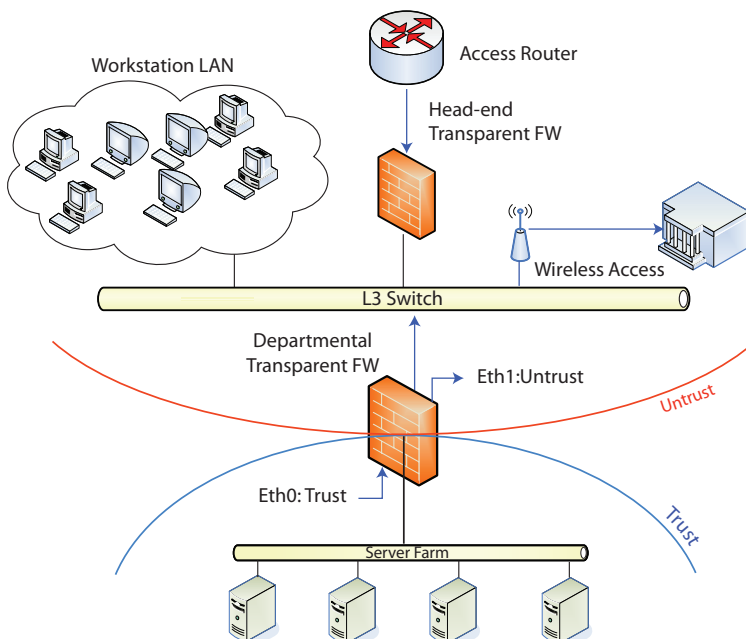
GIGAFIN SOLUTION

The GigaFin-based security appliance provides Gigabit speed at a previously unheard of price point, along with continued low maintenance costs.

For Bennett, the ideal firewall is one that is so cost-effective and easy to deploy and maintain, he can place a number of them in front of separate groups of servers for protection.

Berkeley Lab placed the GigaFin based solution on their intranet and were able to fully utilize their recently upgraded Gigabit infrastructure. Systems requiring high speed access to internal servers were no longer bottlenecked by the slow, pre-existing firewall. The GigaFin-enabled system was able to transmit and receive at line rate, which increased overall productivity and sharing of large amounts of lab data.

The GigaFin solution offers Gigabit throughput at a reasonable cost compared to the cost of traditional high-end firewalls.



FEEDBACK

"GigaFin Networks provides the necessary Gigabit speed for our Intranet firewall protection at a reasonable price."

Michael Bennett
Senior Network Engineer
Lawrence Berkeley Lab

Corporate Headquarters

6373 San Ignacio Ave.
San Jose, California 95119
(tel) +1 408.440.3760

Web site:

www.gigafin.com

E-mail:

info@gigafin.com

©2007 GigaFin, Inc. This document contains information that is proprietary to GigaFin Networks, Inc. No part of this document may be reproduced in any form without prior written approval by GigaFin. GigaFin shall have no liability for errors, omissions or inadequacies regarding the information contained herein or for interpretation thereof. The opinions expressed herein are subject to change without notice.